

GENERAL NOTE:

- ALL MATERIALS TO BE HDPE
- PE-100 AS PER SABS 150 4427 / SANS4427
- HOOP STIFFNESS OF MANHOLE SHAFT TO BE  $8\text{ kN/m}^2$

GENERAL WELDING SPECIFICATION:

- BUTT WELDING OF PIPES TO COMPLY TO SABS 0268-1:1999.
- SANS 10268-1
- HOT GAS WELDING TO COMPLY TO SABS 0268-3:1999.
- SANS 10268-3
- HOT GAS EXTRUSION WELDING TO COMPLY TO SABS 0268-4:1999.
- SANS 10268-4

GENERAL FINISHING NOTE:

- F1- FINISH PIPE WITH SMOOTH ROUNDED EDGE.
- F2- REMOVE INTERNAL WELDING BEAD.

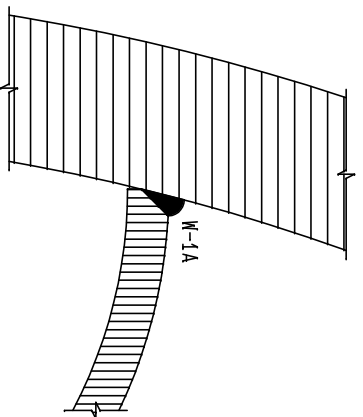
OTHER RELEVANT

MANUFACTURING STANDARDS:

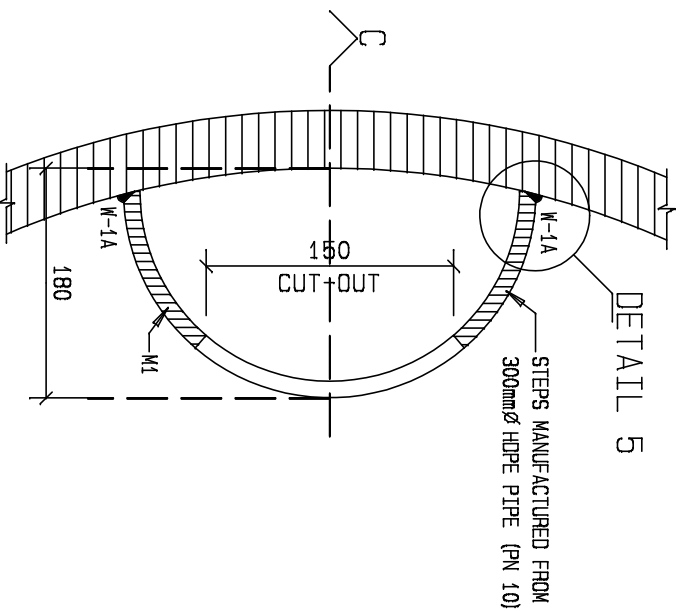
- SABS 0268-1 / SANS 10268-1
- SABS 0269 / SANS 10269
- SABS 0270 / SANS 10270
- SABS 1269 / SANS 1269
- SABS 1655 / SANS 1655
- SABS 1671 / SANS 1671-1

WELDING NOTATION FOR JOINTS

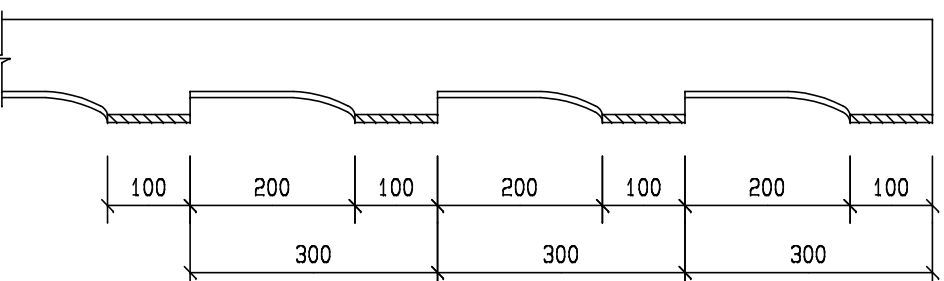
- SEE SABS 0270 / SANS 10270
- PAR 5 AS WELL AS ANNEX A.
- W-1A = REF TABLE A.1 FILLET GROUP A FIG 1A.
- W-2A = REF TABLE A.1 FILLET GROUP A FIG 2A.
- W-3A = REF TABLE A.1 FILLET GROUP A FIG 3A.
- W-3B = REF TABLE A.1 BUTT GROUP B FIG 3B.
- W-BUTT = REF TABLE A.2 BUTT GROUP B



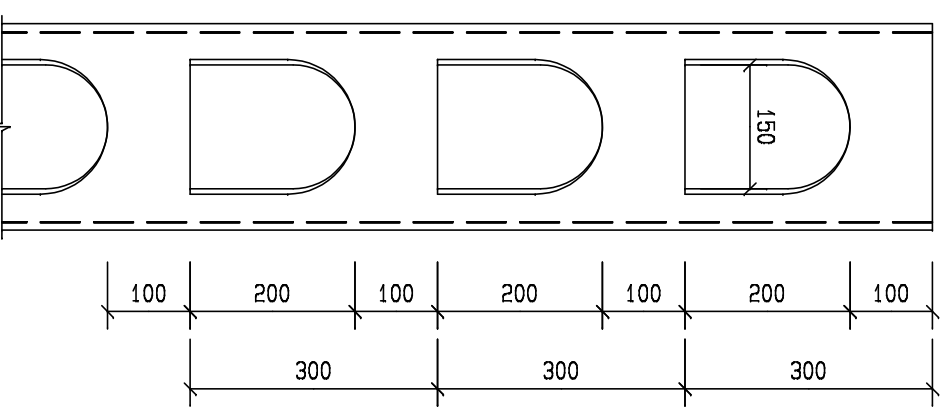
DETAIL 5  
SCALE 1:2



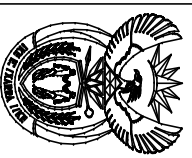
HDPE STEPS IN MANHOLE  
PLAN  
SCALE 1:5



SECTION C  
SCALE 1:10



ELEVATION OF STEPS  
SCALE 1:10



DEPARTMENT OF  
PUBLIC WORKS  
Private Bag X65  
Pretoria  
0001  
Tel (012) 337 2000

Departmental  
DIAGRAMMATIC CIVIL  
ENGINEERING DETAILS  
FOR DOLOMITIC SOILS

title  
TYPICAL WELDING  
DETAILS FOR  
HDPE CABLE MANHOLE:  
SECTION C

scale  
AS SHOWN

date  
22/06/2006

drawing number / type number  
TYPE NO DT 07/C